

038		RESTRAINT SYSTEMS						
039	RR	LT Head air bag	N	985P17SF8A	1	0.8M		
040	RR	Clockspring w/o heated s'wheel	N	B55545MP2A	1	1.1M		
041	RR	Driver air bag	N	985107SF8A	1	0M		
042	RR	LT Belt & retractor charcoal	N	868857SF8A	1	0.4M		
043	RR	Diagnostic unit	N	K88207SF0A	1	0.3M		
044		SEATS & TRACKS						
045	RR	LT Seat back assy sport cloth	N	876507SC1C	1	0.6B		
046	RI	LT R&I front seat				0B		
047		ROOF						
048	RR	Headliner	N	739B07SF0A	1	3.8B		
049		PILLARS, ROCKER & FLOOR						
050	RR	LT Rocker molding w/o SR	N	NOT LISTED	1	0.4B	1.6R	
051	BLANK	Overlap Major Non-Adj. Panel					-0.2R	
052	RR	LT Hinge plr reinf (HSS)	N	G62617SFMA	1	5.7B		
053	RR	LT Aperture panel 16",17" wheel	N	G60237SFMA	1	24.1B	4.2R	
054	BLANK	Overlap Major Adj. Panel					-0.4R	
055		FRONT DOOR						
056	RR	LT Door shell	N	H01017SFMA	1	4.8B	3R	
057	BLANK	Overlap Major Adj. Panel					-0.4R	
058	RR	LT Upper hinge	N	804019AE0A	1	0.3B	0.3R	
059	RR	LT Lower hinge	N	804009AE0A	1	0.3B	0.3R	
060	BLANK	Clear Coat					2.5R	
061		REAR DOOR						
062*	BLND	LT Door shell					<u>1R</u>	
063	RI	LT Belt molding				0.3B		
064	RI	LT Handle, outside pnt to match				0.4B		
065	RI	LT R&I trim panel				0.4B		
066	BLANK	***** ADDITIONAL OPERATIONS *****				0B		
067*	SUB	POST SCAN				0B		
068	RPR	POST SCAN LABOR				1M		
069*	RR	FLEX ADDITIVE				0B		
070*	RR	COVER CAR				0.3B		
071	BLANK	Color Sand and Buff				1.5B		
072*	SUB	HAZARDOUS WASTE REMOVAL				0B		

Totals

Parts

Part			
Parts - New			

Labor

Type	Additional Labor	Hours
Labor - Frame		3
Labor - Body		55.3
Labor - Refinish		20.7
Labor - Mechanical		8

Labors Total

Materials

Materials - Blend	
Materials - Paint	
Materials Adjustment	
Materials - 2 Stage Paint Materials	

Miscellaneous

Other - Sublet

Other - Additional Cost

Adjustment

Total Transaction Amount

Total Claim Before Taxes

Discount Amount

Insurance Pay

Op Codes	
RREP	Operation - Remove and Repair
R1ST	Operation - Repair First, else Replace
REDO	Operation - Redo
CG	Operation - Chip Guard
TT	Operation - Two Tone
PDR	Operation - Paintless Dent Repair
RPR	Operation - Repair
PRPR	Operation - Repair, Partial
RR	Operation - Remove/Replace
RRP	Operation - Remove/Replace, Partial
ADC	Operation - Additional Costs
ADO	Operation - Additional Operations
BLND	Operation - Blend
SUB	Operation - Sublet
RPD	Operation - Related Prior Damage
AA	Operation - Appearance Allowance
BLANK	Operation - Blank
RFRP	Operation - Refinish/Repair
RI	Operation - Remove/Install
ARP	Operation - Additional Repair
ALGN	Operation - Alignment
O/H	Operation - Overhaul
REF	Operation - Refinish
INSP	Operation - Inspect
C/AJ	Operation - Check/Adjust
UPD	Operation - Unrelated Prior Damage
RI	Operation - Remove and Reinstall
Part Type Codes	
A	Parts - Aftermarket
C	Parts - Re-chromed
E	Parts - Existing
L	Parts - Recycled
M	Parts - Remanufactured
N	Parts - New
P	Parts - New, partial
R	Parts - Re-cored
GL	Glass
Labor Codes	
R	Labor - Refinish
S	Labor - Structural
U	User Defined Labor
U	User Defined Labor 1
U	User Defined Labor 2
U	User Defined Labor 3
U	User Defined Labor 4
B	Labor - Body
D	Labor - Diagnostic

E	Labor - Electrical
F	Labor - Frame
G	Labor - Glass
M	Labor - Mechanical

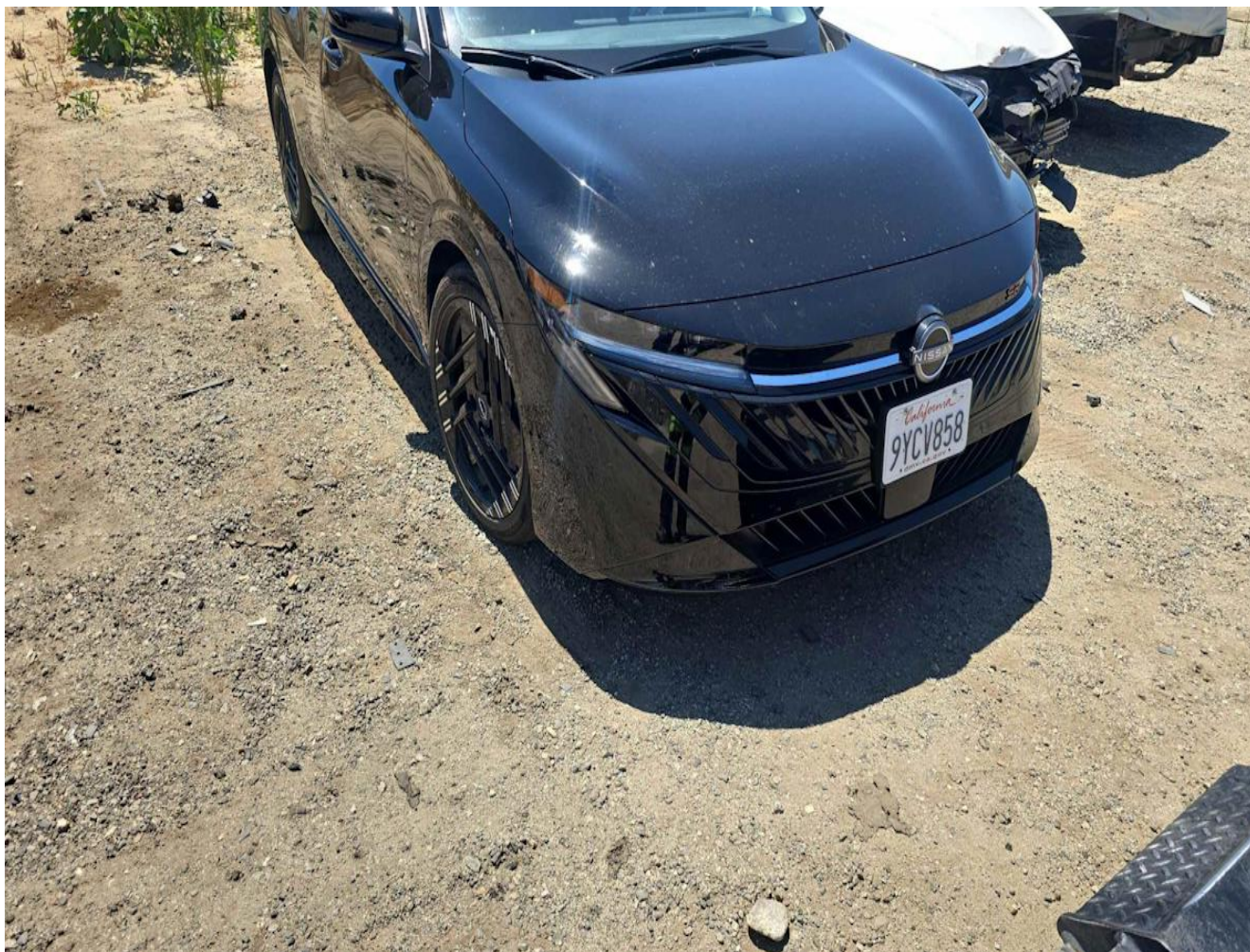
/erac/ice30_prd/prd/vr/vrservices/CRT202606/CRT0623/GRP32/EST3022134775/74
630125_020447de-3e47-4fd7-8236-1462ade923a9.jpg



/erac/ice30_prd/prd/vr/vrservices/CRT202606/CRT0623/GRP32/EST3022134775/74
630125_9d68cf4e-5193-4f23-ae56-3bc82a227cf5.jpg



/erac/ice30_prd/prd/vr/vrservices/CRT202606/CRT0623/GRP32/EST3022134775/74
630125_a61653a0-e467-4774-8966-c272730fd548.jpg



/erac/ice30_prd/prd/vr/vrservices/CRT202606/CRT0623/GRP32/EST3022134775/74
630125_1ca5c599-2399-4e3f-a697-03f875b48e96.jpg

